

SU INIZIATIVA DI MOTORE SANITÀ

Con il patrocinio di:



ROMA

SALA ATTI PARLAMENTARI

BIBLIOTECA DEL SENATO
"GIOVANNI SPADOLINI"

Piazza della Minerva, 38

28 NOVEMBRE 2019

ROAD MAP CAR-T

**PROSPETTIVE ATTUALI E FUTURE
DELL'USO DELLE CAR-T IN ITALIA**

2019 **MOTORE
SANITÀ**
Gestire il Cambiamento

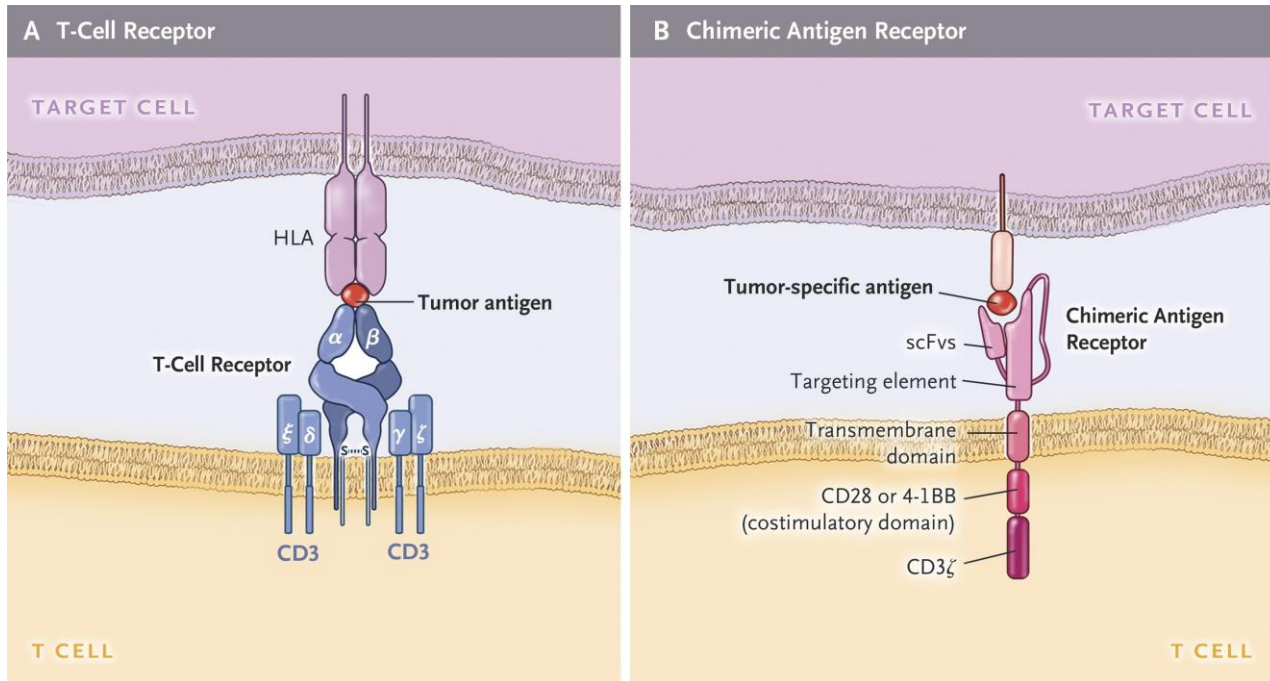
CAR-T oggi

Fabio Ciceri

IRCCS Ospedale San Raffaele

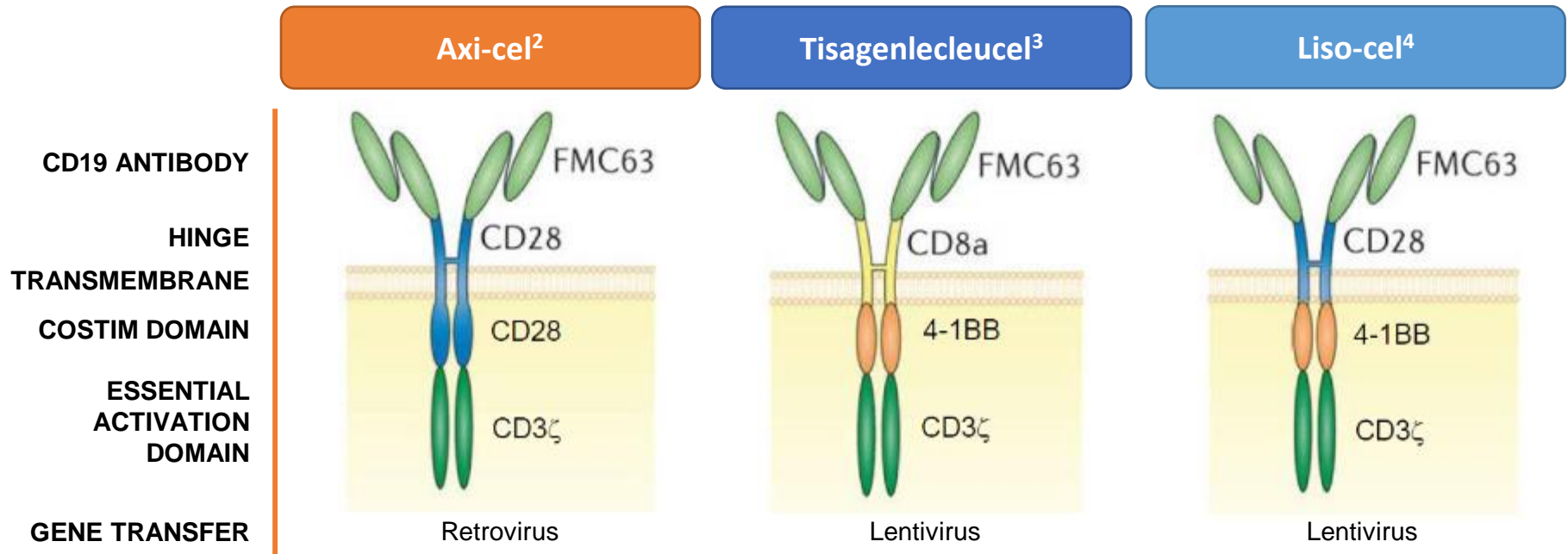
Milano, Italy

Immunoterapia con CAR-T



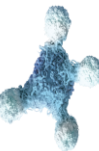
June CH, Sadelain M. N Engl J Med 2018;379:64-73

CD19 CAR-T

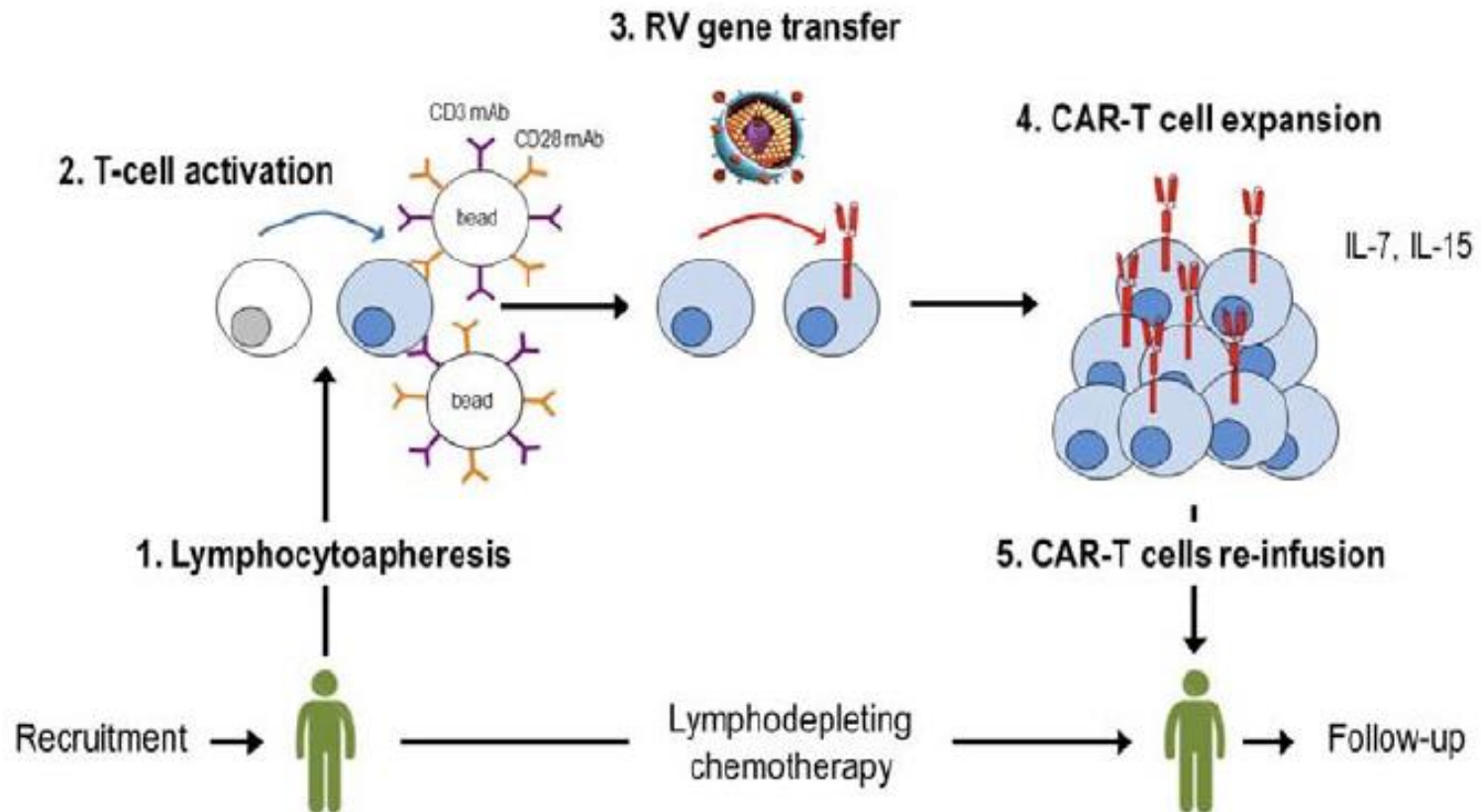


CD, cluster of differentiation.

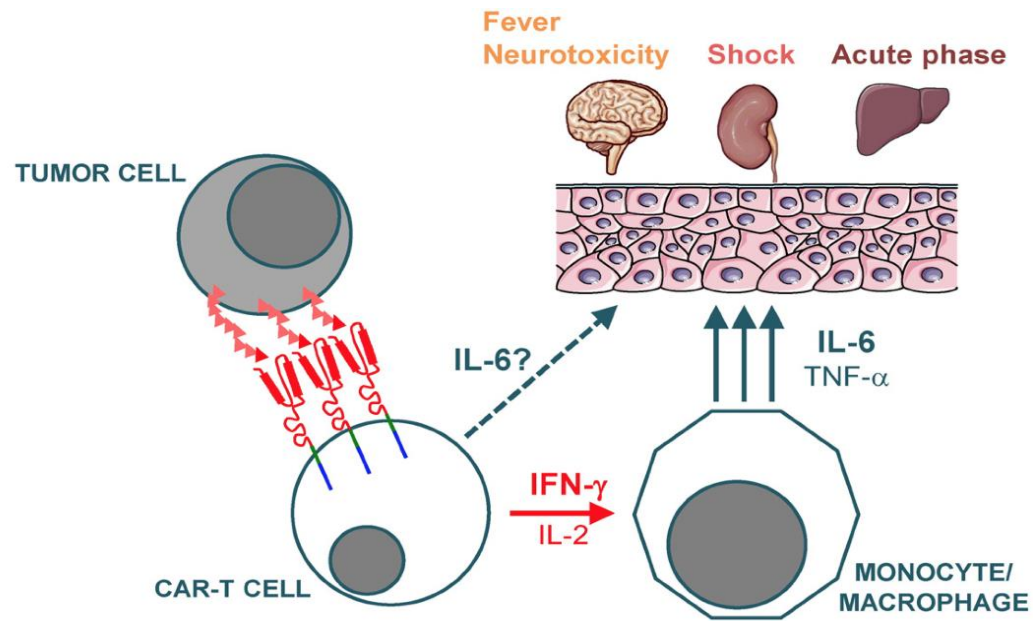
1. Adapted from Van der Steegen SJ, et al. *Nat Rev Drug Discov.* 2015;14:499. 2. YESCARTA product information, EMA, https://www.ema.europa.eu/en/documents/product-information/yescarta-epar-product-information_en.pdf. 3. KYMRIAH product information, EMA, https://www.ema.europa.eu/en/documents/product-information/kymriah-epar-product-information_en.pdf. 4. <https://clinicaltrials.gov/ct2/show/NCT02631044>



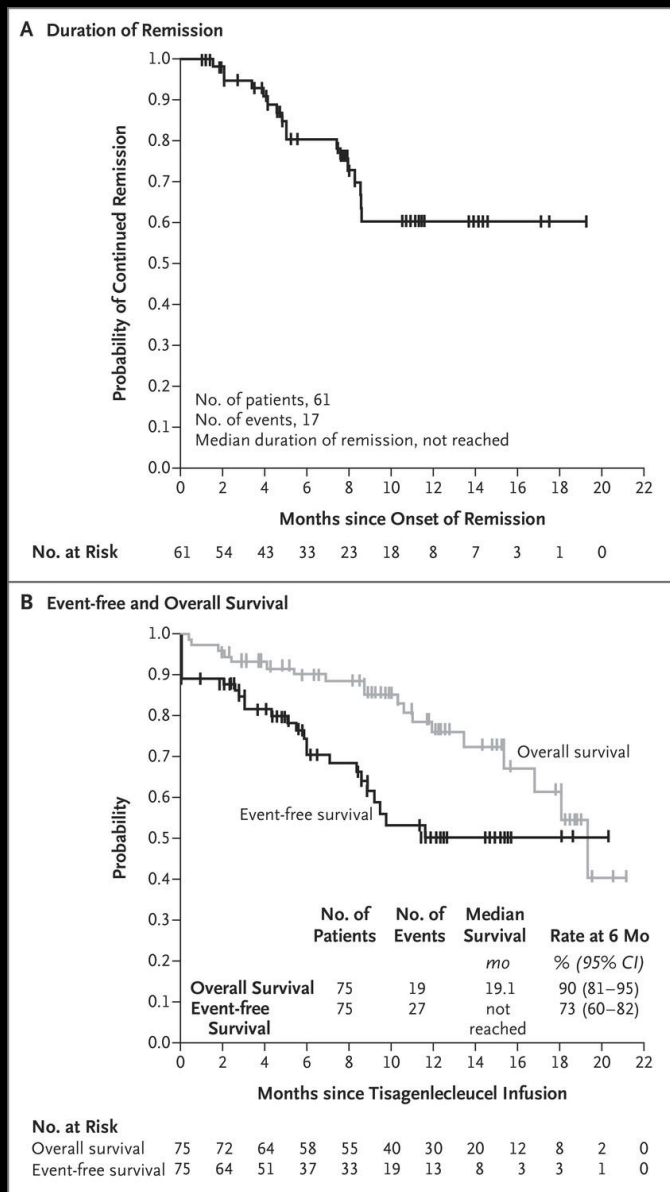
CAR-T: il processo



Cytokine release syndrome

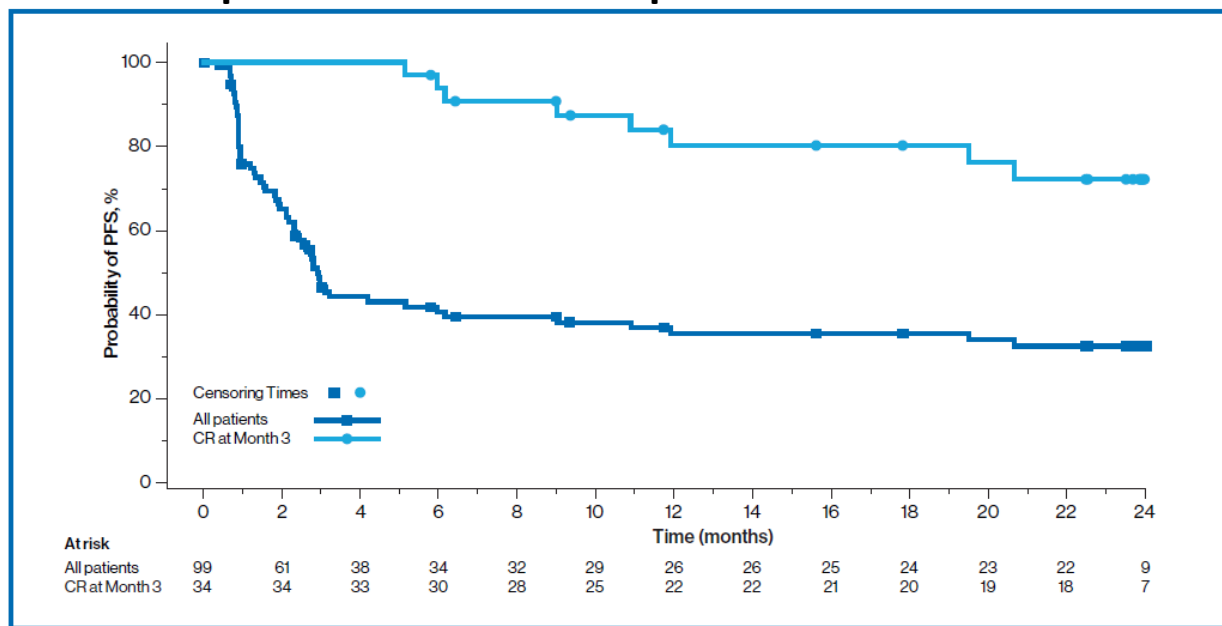


Tisagenlecleucel in Children and Young Adults with B-Cell ALL Duration of Remission, Event-free Survival, and Overall Survival



JULIET: durable responses seen with tisagenlecleucel¹

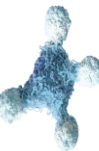
PFS for patients in CR and all patients in the main cohort



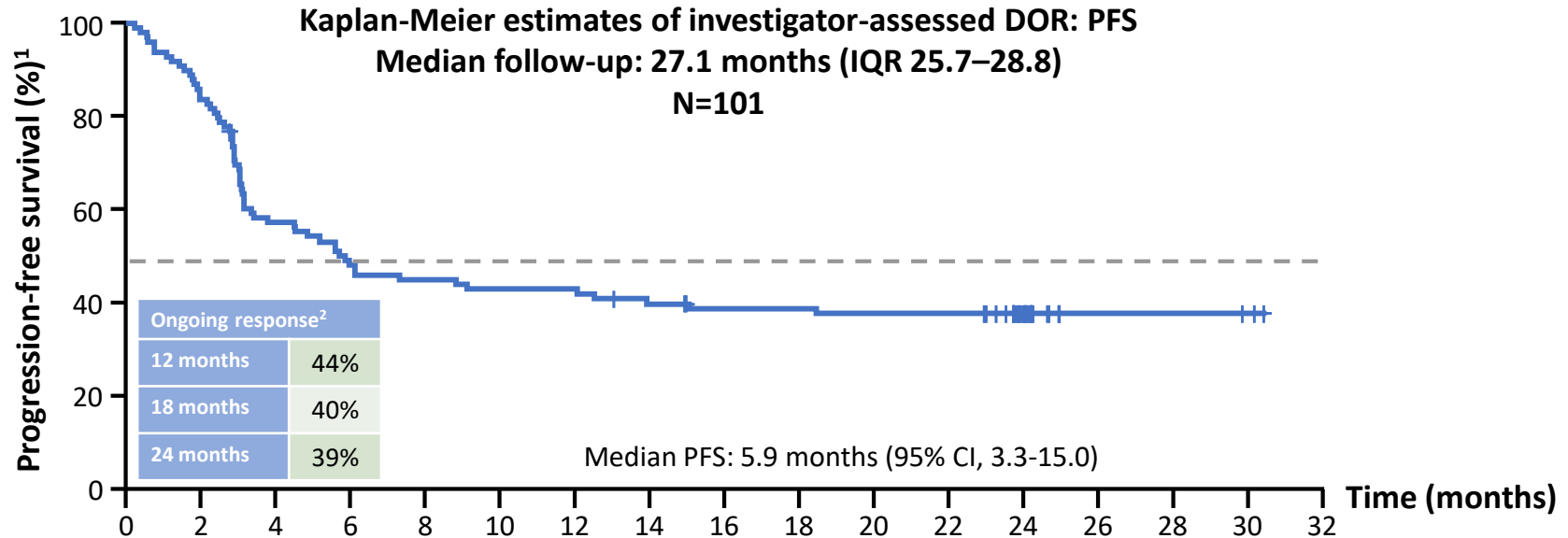
- Among responders, the 12-month PFS survival was 65%^{2,3}
- 54% (15/28) of patients who had achieved a PR converted to CR³
- Includes 2 patients with CR 9-12 months after initial PR⁴
- CAR-T cells were detectable for up to 2 years in responding patients²
- Durable ORR of JULIET was 35%⁴

CR, complete response; ORR, objective response rate; PFS, progression-free survival; PR, partial response.

1. Bachanova V, et al. Poster 254 ICML June 2019, Switzerland; 2. Schuster S, et al. *N Engl J Med.* 2019;380:45. 3. Schuster S, et al. Abstract 1684,ASH2018; 4. Schuster S. *Lancet Oncol.* 2019;20(13):2.



ZUMA-1: durable PFS

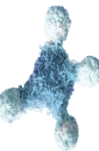


72% of patients progression free at 24 months if CR at 3 months, 75% if PR at 3 months¹
Median duration of response for complete responders not reached¹
Ongoing ORR of 36% at 27.1 months^{1,2,*}

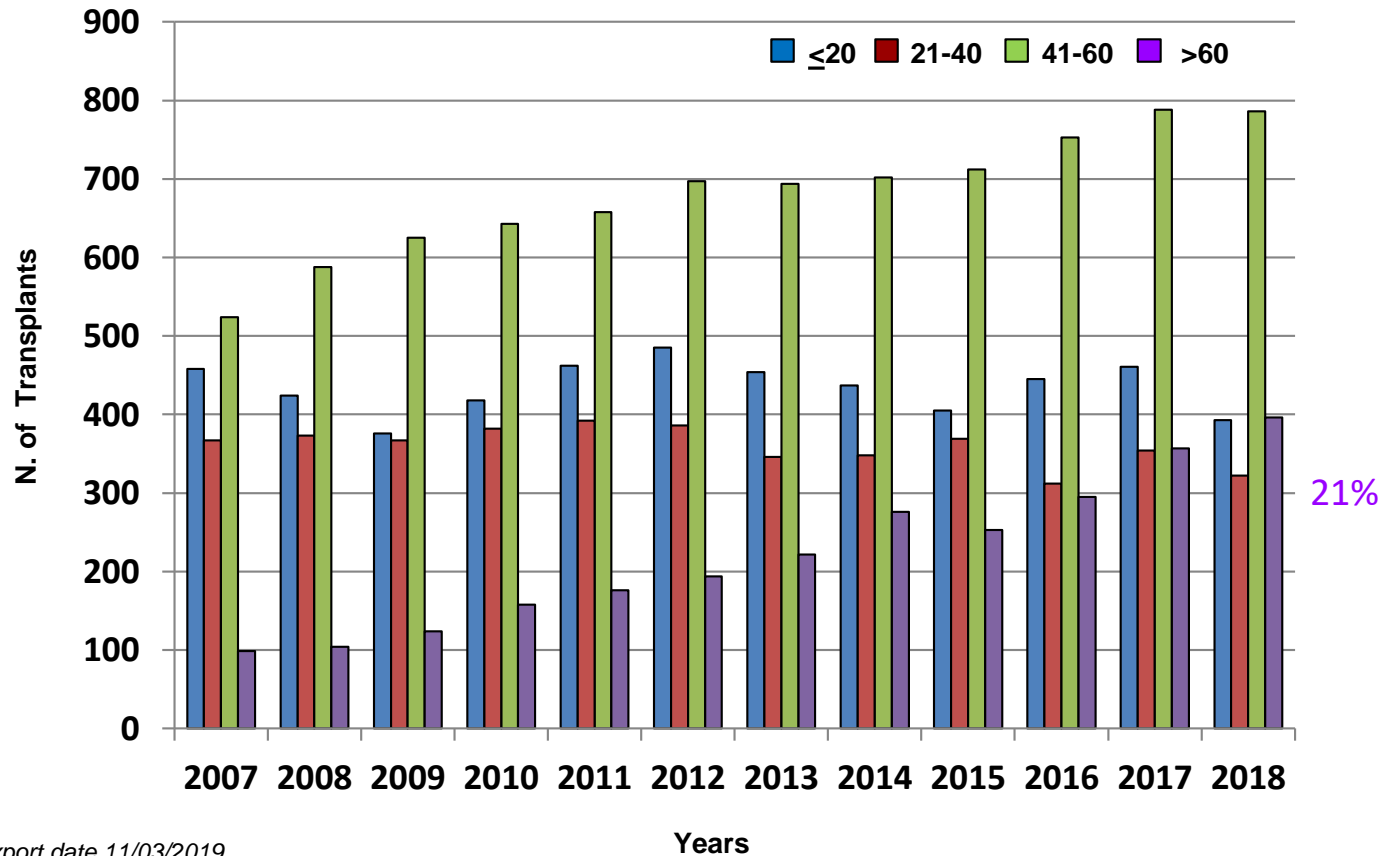
*Not including patients who underwent allogeneic SCT while in response following axicabtagene ciloleucel treatment.

CI, confidence interval; CR, complete response; IQR, interquartile range; ORR, overall response rate; PFS, progression-free survival; PR, partial response.

1. Locke FL, et al. *Lancet Oncol.* 2019;20:31 (incl. suppl.). 2. Reprinted from Neelapu SS, et al. Abstract 2967; poster, ASH 2018.

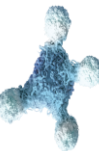


Trapianti allogenici - età

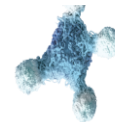
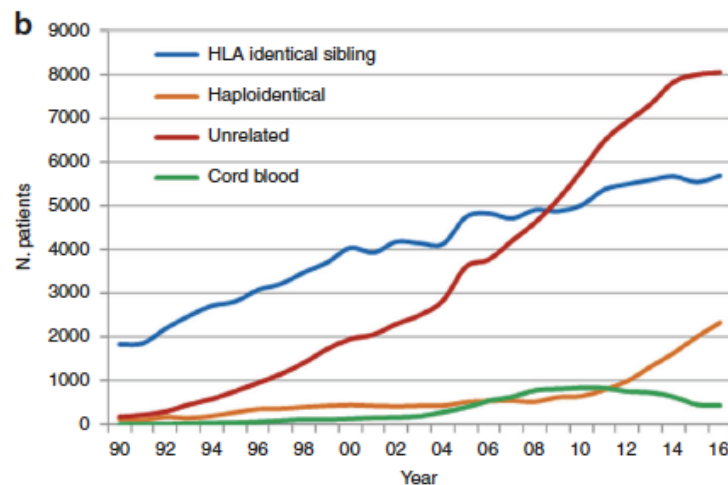
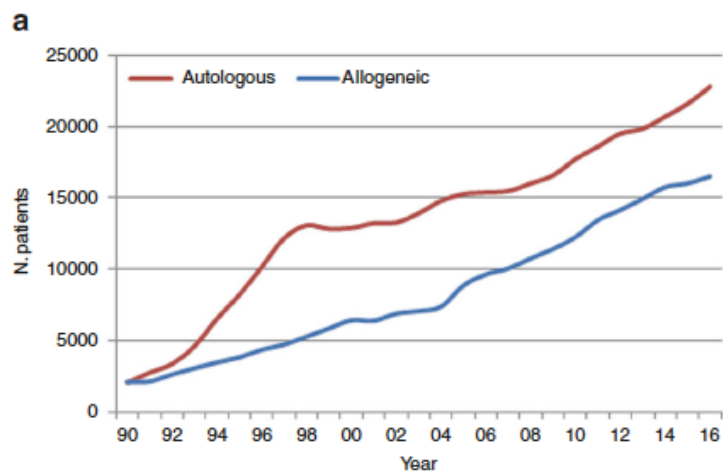


Export date 11/03/2019

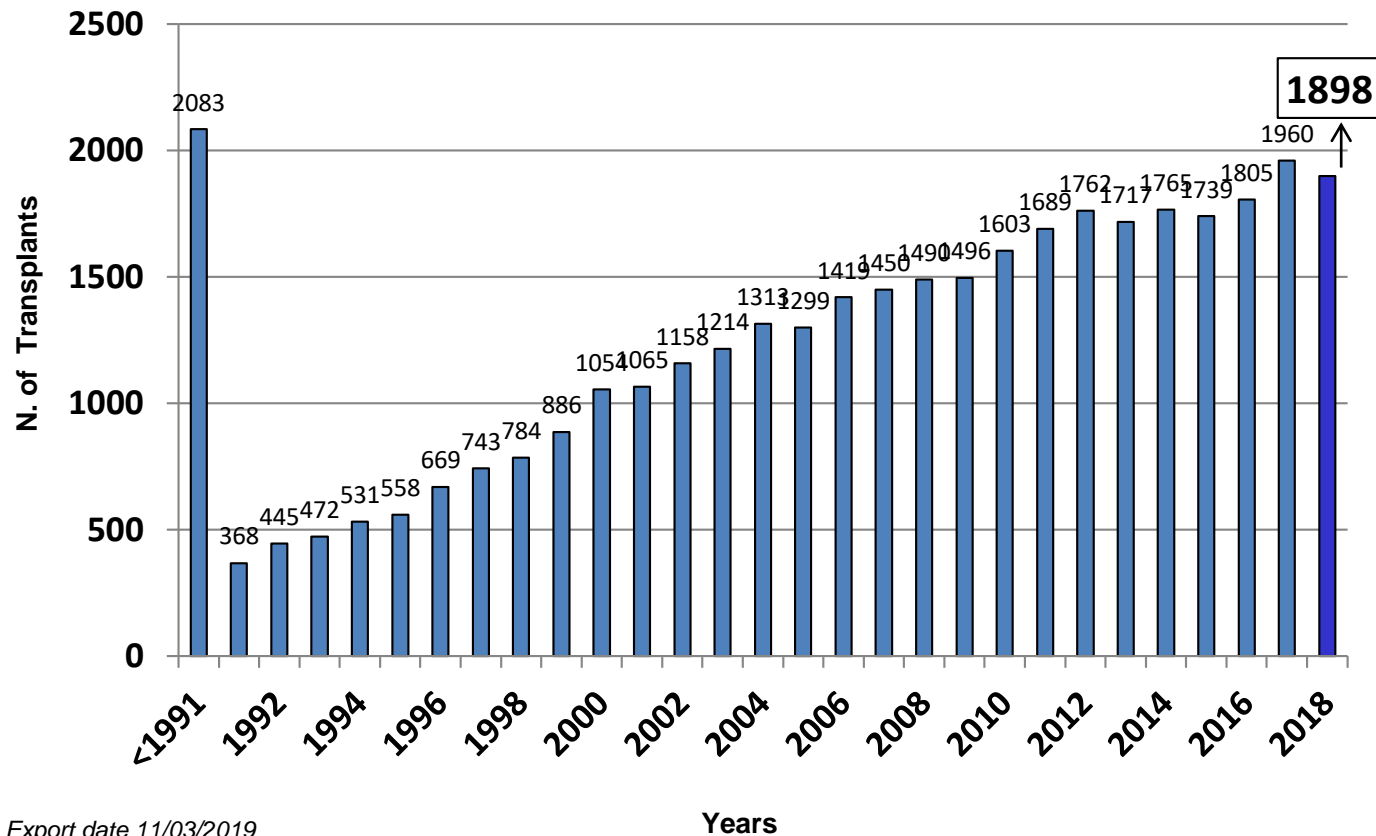
DA VITA NASCE VITA: PROMUOVERE LA DONAZIONE DI CELLULE STAMINALI EMPOIETICHE IN ITALIA



Is the use of unrelated donor transplantation leveling off in Europe? The 2016 European Society for Blood and Marrow Transplant activity survey report



Trapianti allogenici (n = 36.435)



Export date 11/03/2019

Years

DA VITA NASCE VITA: PROMUOVERE LA DONAZIONE DI CELLULE STAMINALI EMOPOIETICHE IN ITALIA

